



MODEL 9067 PRESSURE REGULATOR INSTALLATION AND MAINTENANCE

Standard Units	Maximum Supply Pressure	Operating Temperature Range
Relieving	250 psi	40°F to 120°F

WARNING! For compressed air service only. Do not use on life support systems or breathing air systems.

INSTALLATION

Install regulators so the air flow is in the direction as indicated on the head of the unit. Regulators should be installed downstream from filter or upstream from lubricators, but as close as possible to the pneumatic tools or appliances being serviced. The regulator will accurately control secondary pressure between 2 and 250 psi (see optional spring kits), maximum primary pressure is 300 psi. The self-bleed feature permits use on dead-end applications.

WARNING! Units are die cast aluminum, do not torque when installing regulator or gauge. Use of Teflon tape is NOT recommended.

OPERATION ADJUSTMENTS

After the regulator is installed, back off pressure adjusting T-handle counter-clockwise before the air is turned on. Turn on the air supply and regulate the adjusting T-handle until pressure gauge shows the desired pressure. To lock the T-handle, tighten lock nut on adjustment screw.

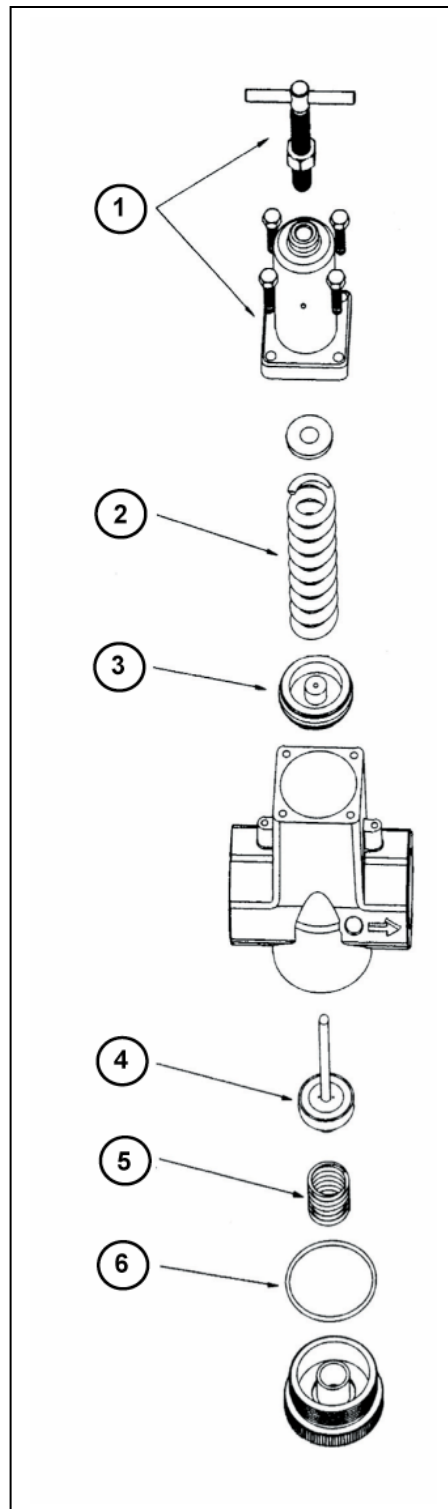
MAINTENANCE

On detection of air leaks, pressure fluctuation, or “creep” depressurize system and remove bottom cap. Inspect valve seat for damage or wear. Inspect seat in head casting for foreign material or damage. Clean with kerosene and blow out with air. Replace any damaged parts.

If leaks persist, remove bonnet, inspect diaphragm and diaphragm seat for wear or foreign materials.

Item	Description	Kit Number	Contents
1, 2, 3, 4, 5, 6	Rebuild Kit	900598	T-handle, Adjusting Screw Assembly, Spring Cage, Screws, Spring (0-125 PSI Range), Relieving Piston, Valve Assembly, O-Ring, Valve Spring

For replacement or repair filter and regulator parts, contact EXAIR at 1-800-903-9247 or techhelp@exair.com. Call (513) 671-3322 for outside the US and Canada.



If you have any questions or problems, please contact an EXAIR Application Engineer at:

Toll Free: 1-800-903-9247 (U.S. and Canada)
Telephone: (513) 671-3322 outside of U.S. and Canada
Toll Free Fax: 1-866-329-3924 (U.S. and Canada)
FAX: (513) 671-3363 outside of U.S. and Canada
E-mail: techhelp@exair.com
Website: www.exair.com