

110 GALLON LOCK RING INSTALLATION & MAINTENANCE

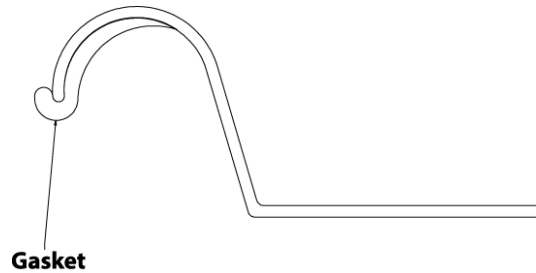


FIGURE 1

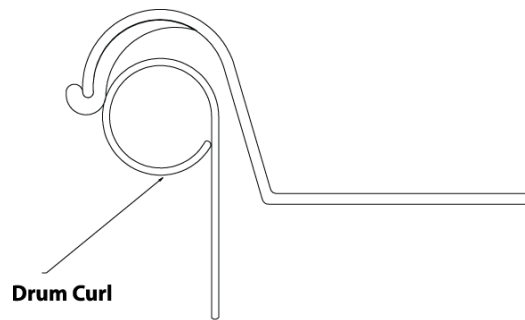


FIGURE 2

Lock Ring Installation

Check to ensure the gasket on the lid is properly installed in the groove (Figure 1). Place the lid onto the drum making sure the gaskets seats properly all the way around the drum curl (Figure 2). Position the locking ring with the lugs downward. Ensure the inner channel of the locking ring engages entire drum curl and lid (Figure 3). Apply a downward pressure on the lid. Use a non-sparking dead-blow mallet to further seat the lid and drum curl into the inner channel of the locking ring. Insert the bolt through the unthreaded lug of the locking ring.

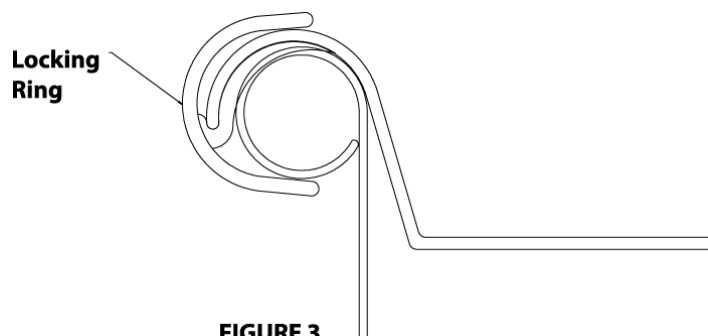
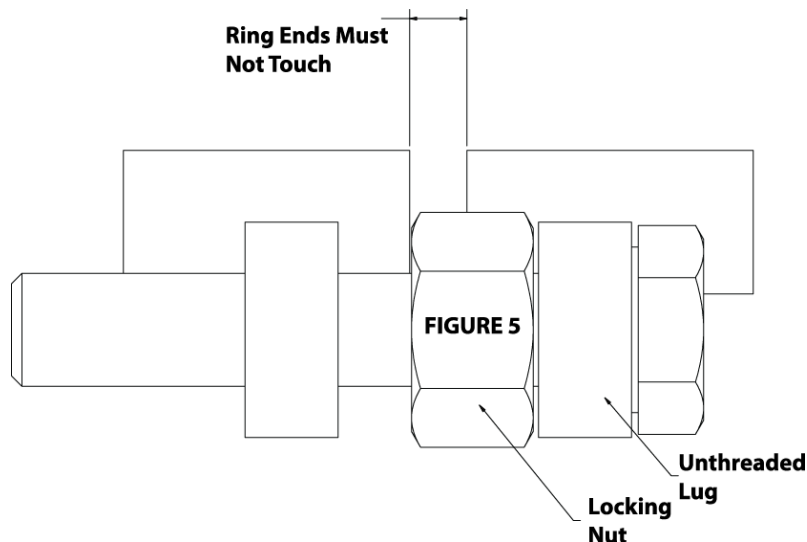
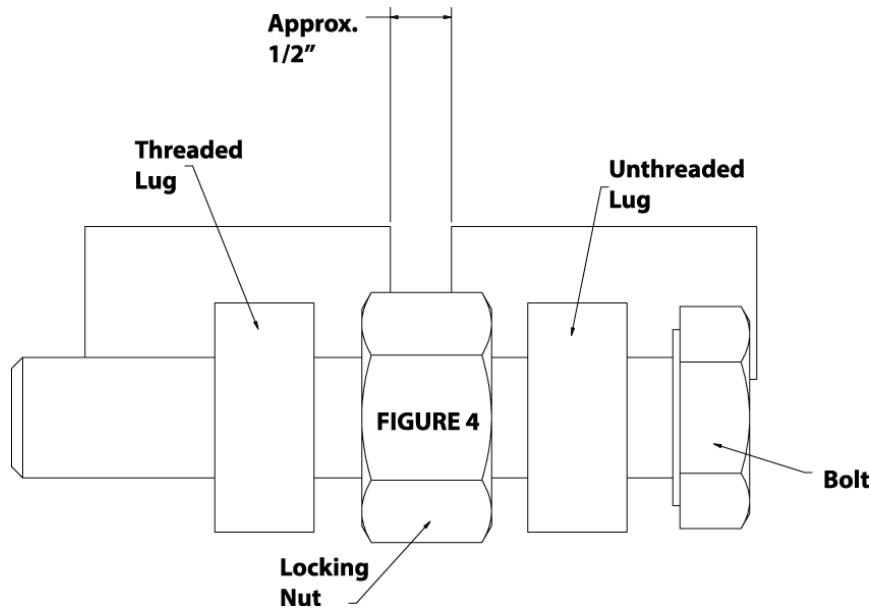


FIGURE 3

Assemble the hex nut onto the threaded end of the bolt. Thread the bolt into the threaded lug on the locking ring until the gap is about $\frac{1}{2}$ " (Figure 4). Tighten the bolt with a calibrated torque wrench while applying downward pressure on the lid and hammering the outside of the locking ring with a non-sparking dead-blow mallet to further seat the ring. Continue tightening and hammering the locking ring until the torque stabilizes at 55-60 ft-lbs and does not decrease when further hammering on the locking ring. The ends of the locking ring must not touch. Lock the locking ring in place by tightening the nut against the unthreaded lug (Figure 5).



If further assistance is needed, please contact an EXAIR Application Engineer at:

Toll Free: 1-800-903-9247 (U.S. & Canada)
 Telephone: 513 671-3322 outside of U.S. & Canada
 Toll Free Fax: 866-329-3924 (U.S. & Canada)
 FAX: 513 671-3363 outside of U.S. & Canada
 E-mail: techelp@exair.com
 Website: www.exair.com